



37 Beech Avenue, Alfreton, DE55 7EW

£130,000

Chain free and full of potential, this two bedroom semi-detached is sat on a decent corner plot in a popular residential patch of Alfreton.

Inside, there's a living room with understairs storage, a dining kitchen, and a conservatory at the back. Upstairs you'll find two bedrooms and a shower room.

The garden's a good size thanks to the corner plot, and there's rear gated access to a driveway for two cars.

Property Construction

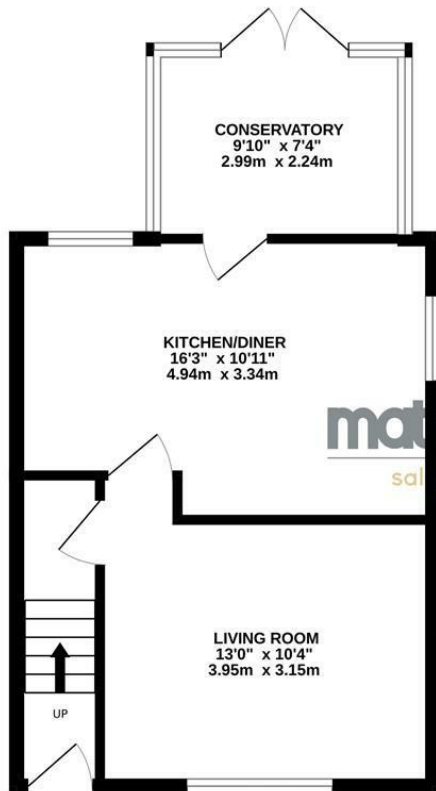
The property is believed to be of steel-framed construction, which is typical of homes built in this era and location.





- Semi detached
- Dining kitchen
- Driveway
- Recently fitted boiler with smart controls
- Two bedrooms
- Conservatory
- Being sold chain free

GROUND FLOOR
418 sq.ft. (38.8 sq.m.) approx.



1ST FLOOR
346 sq.ft. (32.1 sq.m.) approx.



TOTAL FLOOR AREA : 764 sq.ft. (71.0 sq.m.) approx.

Whilst every attempt has been made to ensure the accuracy of the floorplan contained here, measurements of doors, windows, rooms and any other items are approximate and no responsibility is taken for any error, omission or mis-statement. This plan is for illustrative purposes only and should be used as such by any prospective purchaser. The services, systems and appliances shown have not been tested and no guarantee as to their operability or efficiency can be given.
Made with Metropix ©2025

